

PACIFIC CORPORATE CENTER

2,577 Sq Ft Office



LOCATION Building 17
15350 SW Sequoia Parkway, Suite 380
Portland OR 97224

LEASING CONTACT Sam Briggs
samb@pactrust.com
503-624-6300

TOTAL SQ FT 2,577 SF
FEATURES Class A office
Easy access to I-5

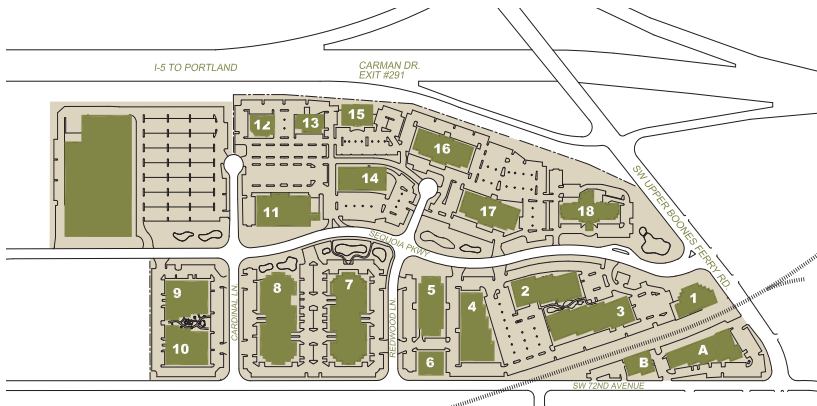
Dave Hicks
daveh@pactrust.com
503-624-6300

ANNUAL RATE \$22.00/sqft
Full service

DATE AVAILABLE Available now

BUILDING KEY

1. 15755 SW Sequoia Parkway
2. 15495 SW Sequoia Parkway
3. 15575 SW Sequoia Parkway
4. 15353 SW Sequoia Parkway
5. 15333 SW Sequoia Parkway
6. 7000 SW Redwood Lane
7. 15115 SW Sequoia Parkway
8. 15055 SW Sequoia Parkway
9. 14945 SW Sequoia Parkway
10. 7007 SW Cardinal Lane
11. 15060 SW Sequoia Parkway
12. 6600 SW Cardinal Lane
13. 6610 SW Cardinal Lane
14. 15230 SW Sequoia Parkway
15. 6640 SW Redwood Lane
16. 6650 SW Redwood Lane
17. 15350 SW Sequoia Parkway
18. 15686 SW Sequoia Parkway
- A. 15862 SW 72nd Avenue
- B. 15500 SW 72nd Avenue

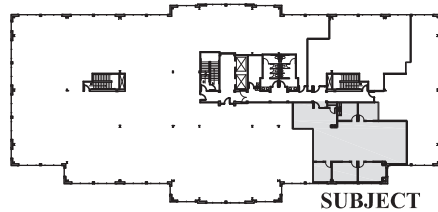
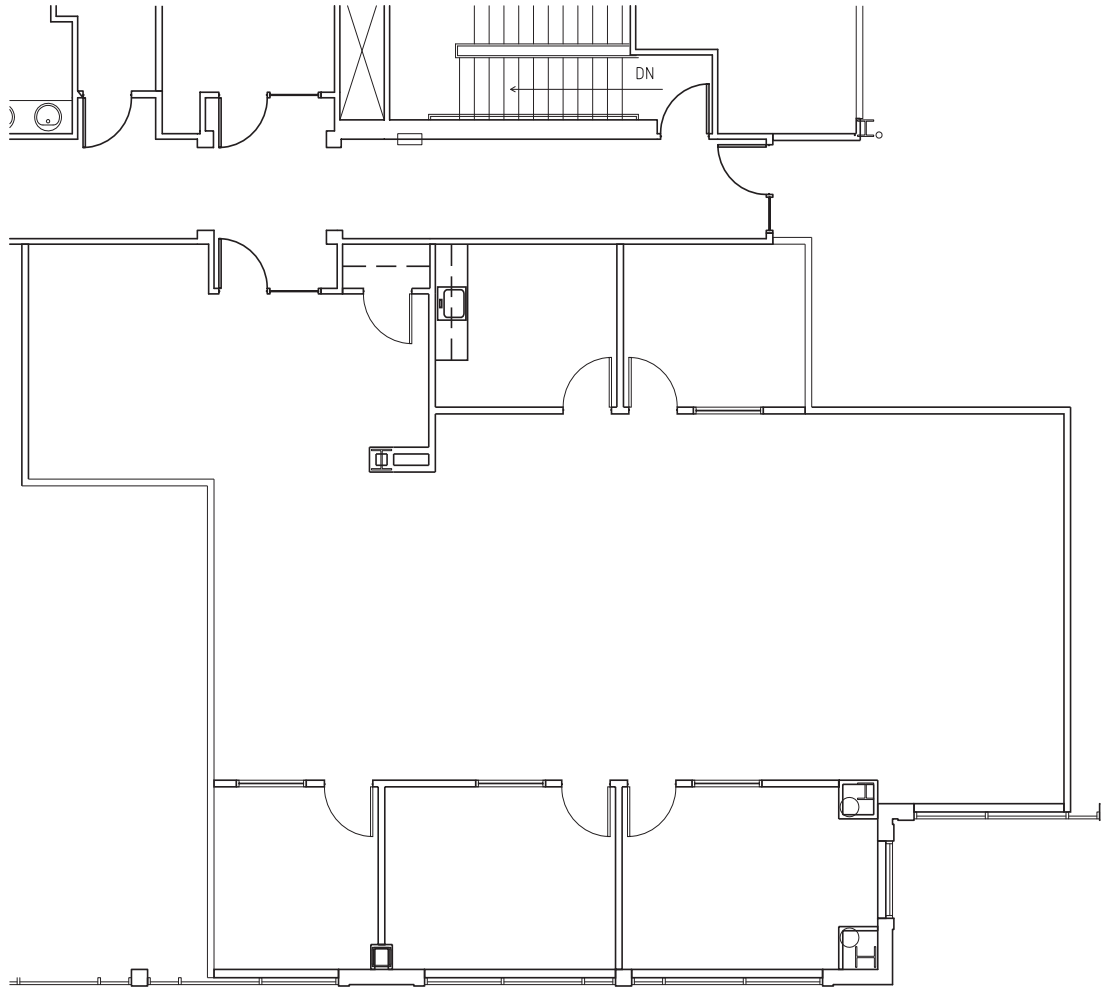


PACIFIC CORPORATE CENTER
Portland OR 97224

All addresses are Portland, OR 97224

PACIFIC CORPORATE CENTER

Building 17 • 15350 SW Sequoia Parkway, Suite 380 • Portland OR 97224



SUBJECT

AVAILABLE
2,577 SF TOTAL

BUILDING KEY PLAN
NOT TO SCALE



PACTRUST

Pacific Realty Associates, L.P.

15350 SW Sequoia Parkway, Suite 300, Portland OR 97224 • 503-624-6300 • www.pactrust.com

The square footage and rates quoted herein are subject to change. PacTrust can only guarantee square footage and rates with a signed lease agreement.