

PACIFIC BUSINESS PARK

7,530 Sq Ft Warehouse/Distribution



LOCATION Building 9
12403 NE Marx Street
Portland OR 97230

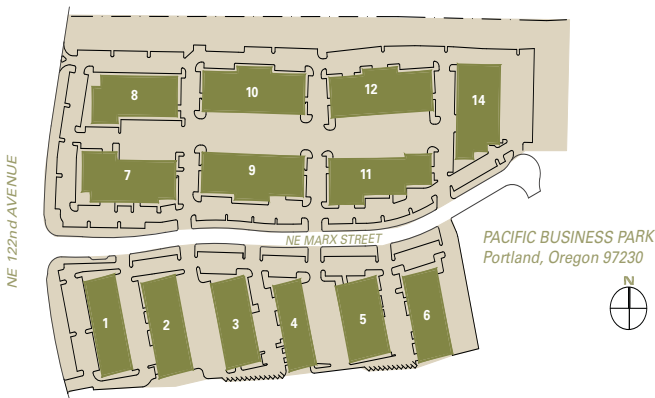
LEASING CONTACT Matt Krueger
mattk@pactrust.com
503-624-6300

TOTAL SQ FT 7,530 SF
OFFICE SQ FT 4,000 SF
DOCK-HIGH DOORS 5
DRIVE-IN DOORS 1
FEATURES End-cap space
10 minutes to PDX
MONTHLY RATE \$0.73/sqft
NNN
DATE AVAILABLE Available now

BUILDING KEY

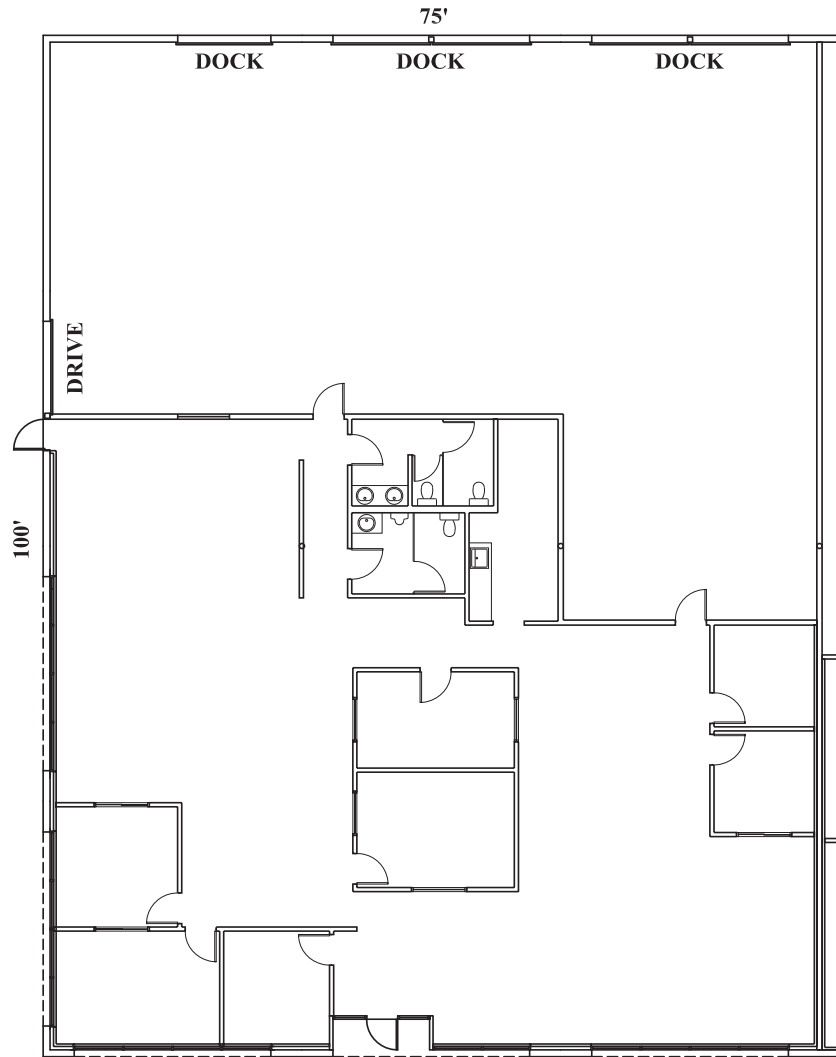
1. 4900 - 4916 NE 122nd Avenue
2. 12302 - 12360 NE Marx Street
3. 12402 - 12480 NE Marx Street
4. 12502 - 12570 NE Marx Street
5. 12602 - 12670 NE Marx Street
6. 12702 - 12780 NE Marx Street
7. 12207 - 12239 NE Marx Street
8. 5208 NE 122nd Avenue
9. 12403 - 12421 NE Marx Street
10. 12439 - 12449 NE Marx Street
11. 12505 - 12595 NE Marx Street
12. 12605 - 12695 NE Marx Street
14. 12630 - 12650 NE Marx Street

All addresses are Portland, OR 97230

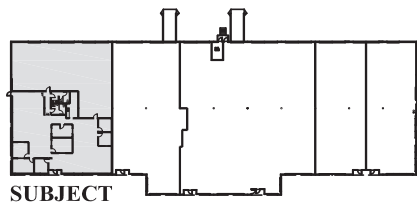


PACIFIC BUSINESS PARK

Building 9 • 12403 NE Marx Street • Portland OR 97230



AVAILABLE
7,530 SF TOTAL
4,000 SF OFFICE



SUBJECT

BUILDING KEY PLAN
NOT TO SCALE



PACTRUST

Pacific Realty Associates, L.P.

15350 SW Sequoia Parkway, Suite 300, Portland OR 97224 • 503-624-6300 • www.pactrust.com

The square footage and rates quoted herein are subject to change. PacTrust can only guarantee square footage and rates with a signed lease agreement.