

PACIFIC BUSINESS PARK

13,342 Sq Ft Warehouse/Distribution



LOCATION

Building 7
12225 NE Marx Street
Portland OR 97230

LEASING CONTACT

Matt Krueger
mattk@pactrust.com
503-624-6300

TOTAL SQ FT

13,342 SF

OFFICE SQ FT

3,056 SF

DOCK-HIGH DOORS

5

DRIVE-IN DOORS

5

FEATURES

Easy access to I-205 & I-84
10 minutes to PDX

MONTHLY RATE

\$0.42/sqft
NNN

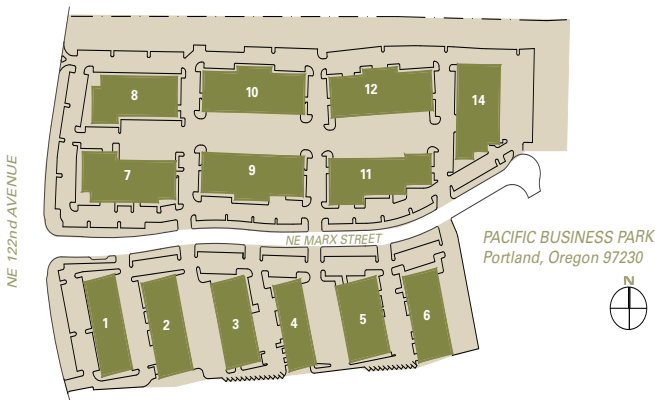
DATE AVAILABLE

Available now

BUILDING KEY

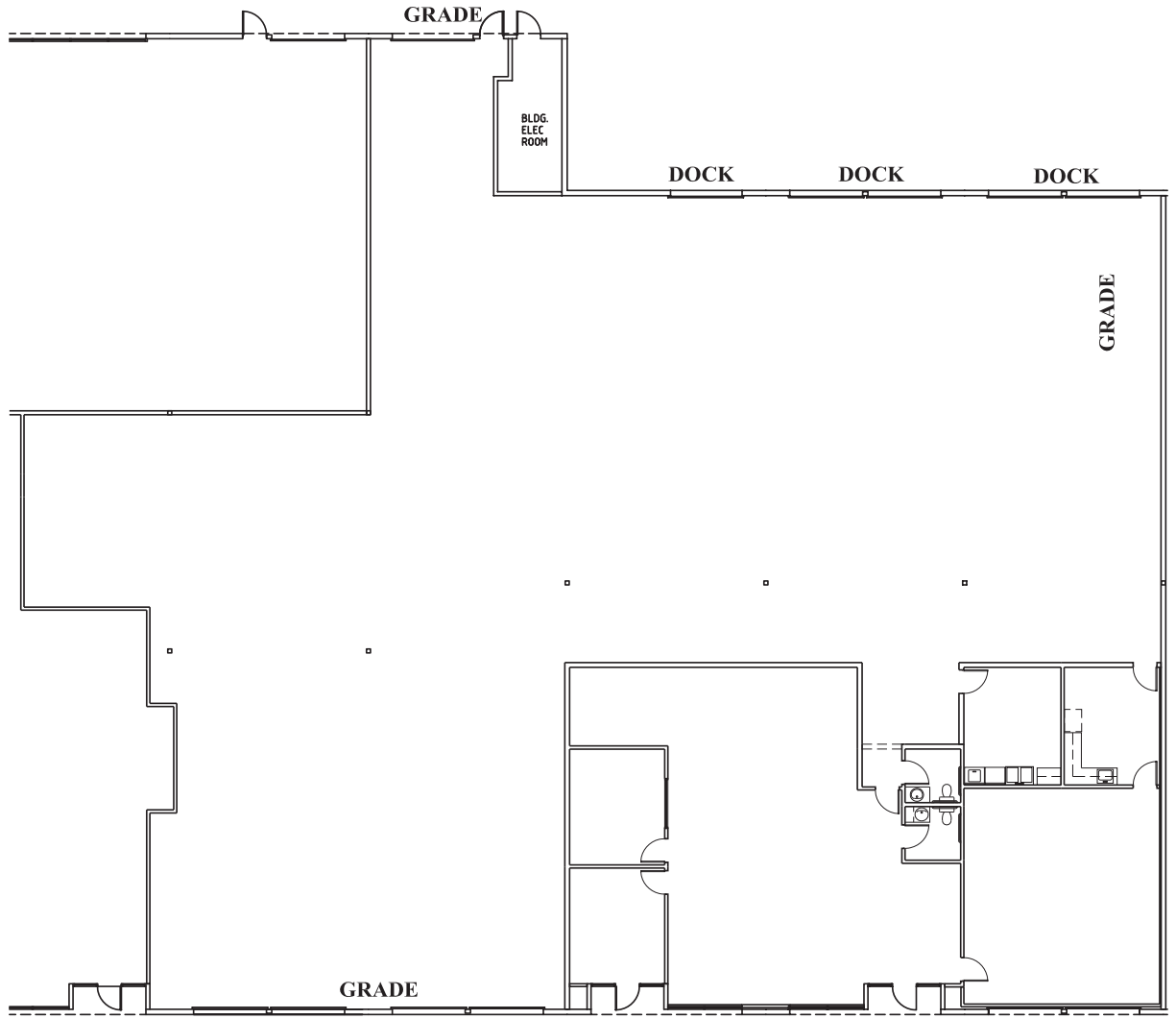
1. 4900 - 4916 NE 122nd Avenue
2. 12302 - 12360 NE Marx Street
3. 12402 - 12480 NE Marx Street
4. 12502 - 12570 NE Marx Street
5. 12602 - 12670 NE Marx Street
6. 12702 - 12780 NE Marx Street
7. 12207 - 12239 NE Marx Street
8. 5208 NE 122nd Avenue
9. 12403 - 12421 NE Marx Street
10. 12439 - 12449 NE Marx Street
11. 12505 - 12595 NE Marx Street
12. 12605 - 12695 NE Marx Street
14. 12630 - 12650 NE Marx Street

All addresses are Portland, OR 97230

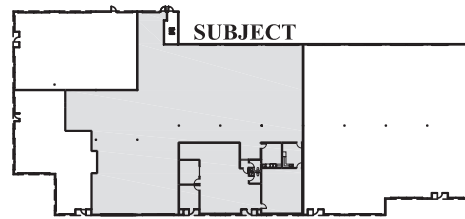


PACIFIC BUSINESS PARK

Building 7 • 12225 NE Marx Street • Portland OR 97230



AVAILABLE
3,056 SF Office
13,342 SF TOTAL



BUILDING KEY PLAN
NOT TO SCALE



PACTRUST

Pacific Realty Associates, L.P.

15350 SW Sequoia Parkway, Suite 300, Portland OR 97224 • 503-624-6300 • www.pactrust.com

The square footage and rates quoted herein are subject to change. PacTrust can only guarantee square footage and rates with a signed lease agreement.