

PACIFIC BUSINESS PARK

5,437 Sq Ft Warehouse/Distribution



LOCATION Building 12
12695 NE Marx Street
Portland OR 97230

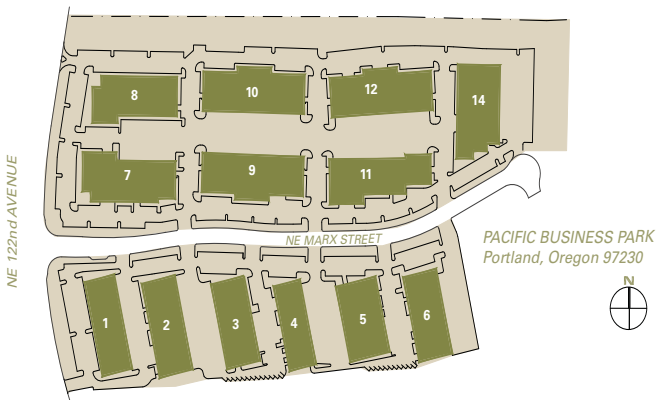
LEASING CONTACT Matt Krueger
mattk@pactrust.com
503-624-6300

TOTAL SQ FT 5,437 SF
OFFICE SQ FT 2,396 SF
DOCK-HIGH DOORS 3
DRIVE-IN DOORS 1
FEATURES End-cap space
10 minutes to PDX
MONTHLY RATE \$0.67/sqft
NNN
DATE AVAILABLE Available now

BUILDING KEY

1. 4900 - 4916 NE 122nd Avenue
2. 12302 - 12360 NE Marx Street
3. 12402 - 12480 NE Marx Street
4. 12502 - 12570 NE Marx Street
5. 12602 - 12670 NE Marx Street
6. 12702 - 12780 NE Marx Street
7. 12207 - 12239 NE Marx Street
8. 5208 NE 122nd Avenue
9. 12403 - 12421 NE Marx Street
10. 12439 - 12449 NE Marx Street
11. 12505 - 12595 NE Marx Street
12. 12605 - 12695 NE Marx Street
14. 12630 - 12650 NE Marx Street

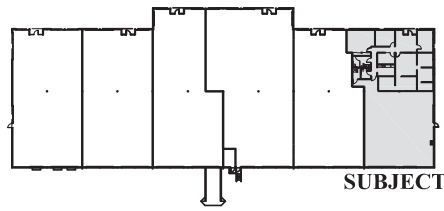
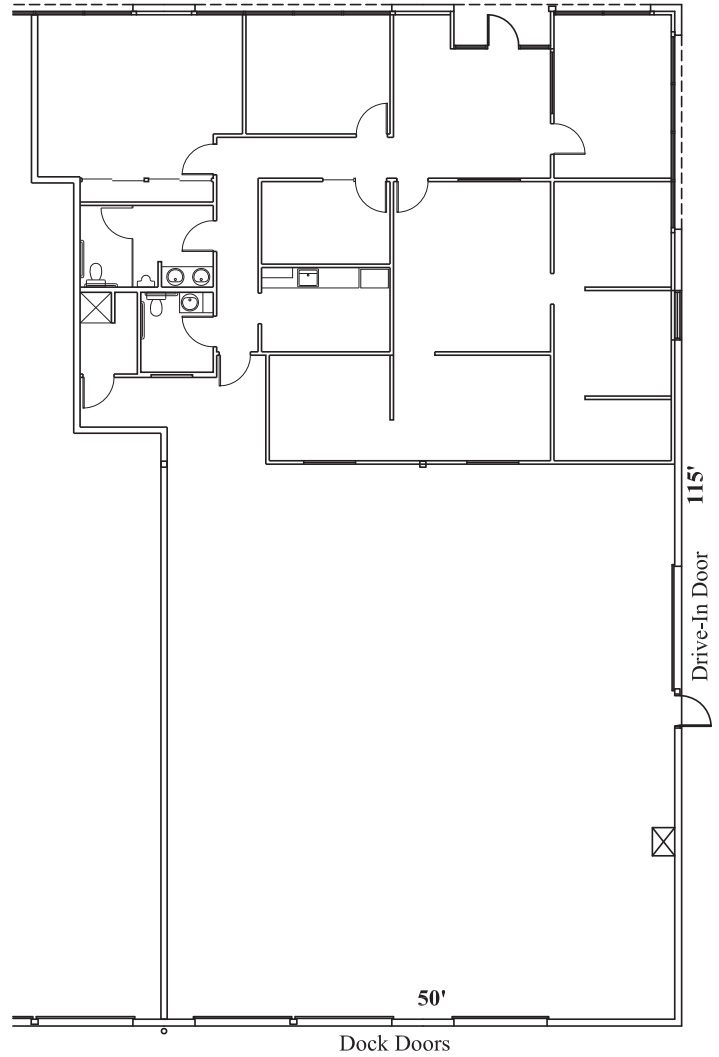
All addresses are Portland, OR 97230



PACIFIC BUSINESS PARK

Building 12 • 12695 NE Marx Street • Portland OR 97230

AVAILABLE
5,437 SF TOTAL
2,396 SF OFFICE



BUILDING KEY PLAN
NOT TO SCALE



PACTRUST

Pacific Realty Associates, L.P.

15350 SW Sequoia Parkway, Suite 300, Portland OR 97224 • 503-624-6300 • www.pactrust.com

The square footage and rates quoted herein are subject to change. PacTrust can only guarantee square footage and rates with a signed lease agreement.