

# PACTRUST BUSINESS CENTER

## 11,056 Sq Ft Warehouse/Distribution



**LOCATION** Building D  
16165 SW 72nd Avenue  
Portland OR 97224

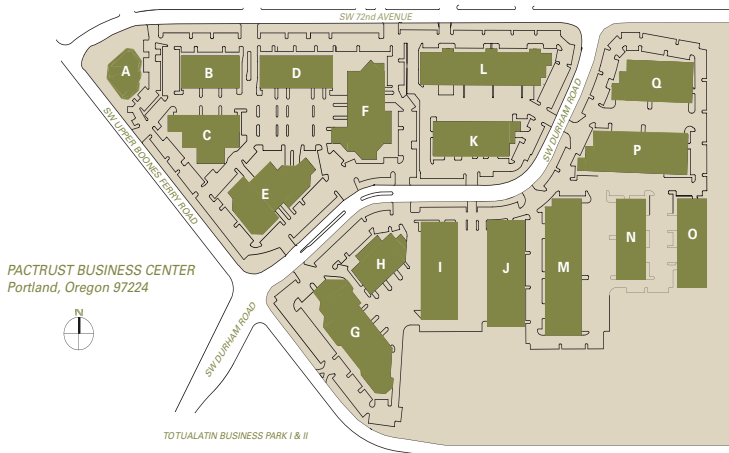
**LEASING CONTACT** Sam Briggs  
samb@pactrust.com  
503-624-6300

**TOTAL SQ FT** 11,056 SF  
**OFFICE SQ FT** 5,250 SF  
**DOCK-HIGH DOORS** 2  
**DRIVE-IN DOORS** 1  
**FEATURES** End-cap space  
**MONTHLY RATE** \$0.82/sqft NNN  
**DATE AVAILABLE** Available now

Dave Hicks  
daveh@pactrust.com  
503-624-6300

### BUILDING KEY

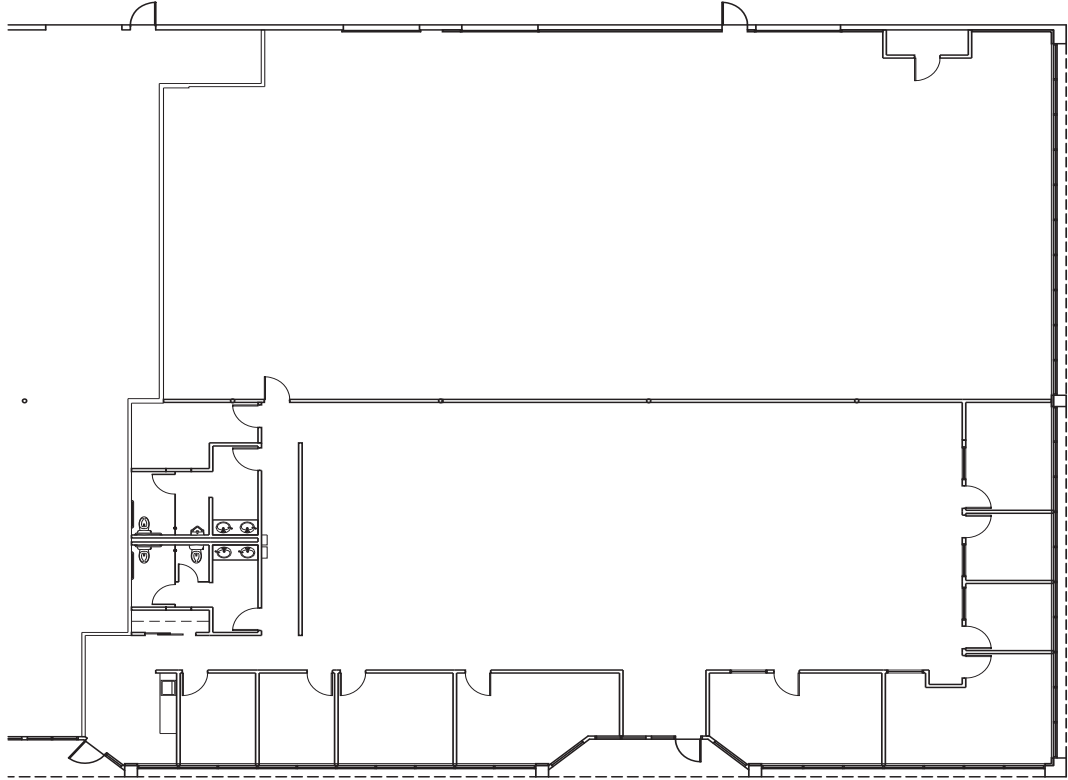
- A. 16101 SW 72nd Avenue
- B. 16125 SW 72nd Avenue
- C. 16150 - 16170 SW Upper Boones Ferry Road
- D. 16195 SW 72nd Avenue
- E. 16260 - 16280 SW Upper Boones Ferry Road
- F. 16505 - 16575 SW 72nd Avenue
- G. 7350 - 7390 SW Durham Road
- H. 7324 - 7340 SW Durham Road
- I. 7272 SW Durham Road
- J. 7250 SW Durham Road
- K. 7245 SW Durham Road
- L. 16655 SW 72nd Avenue
- M. 7244 SW Durham Road
- O. 7228 SW Durham Road
- P. 7216 SW Durham Road
- Q. 7204 SW Durham Road



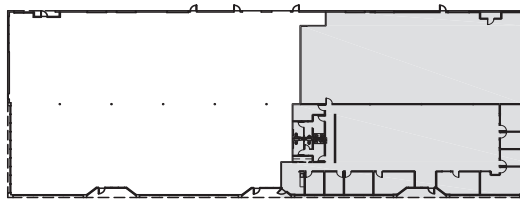
All addresses are Portland, OR 97224

# PACTRUST BUSINESS CENTER

Building D • 16165 SW 72nd Avenue • Portland OR 97224



AVAILABLE  
5,250 SF OFFICE  
11,056 SF TOTAL



SUBJECT

**BUILDING KEY PLAN**  
NOT TO SCALE



## PACTRUST

Pacific Realty Associates, L.P.

15350 SW Sequoia Parkway, Suite 300, Portland OR 97224 • 503-624-6300 • [www.pactrust.com](http://www.pactrust.com)

The square footage and rates quoted herein are subject to change. PacTrust can only guarantee square footage and rates with a signed lease agreement.