

# Pacific Parkway Center

Building B • 12909 SW 68th Parkway Suite #190 • Portland, OR 97224

Available For Lease



## HIGHLIGHTS

- 10,431 sf of Class A office space, Divisible.
- Building Conference Room
- 4/1,000 Parking Ratio
- Call for Rates
- Available Immediately
- Owner Managed

## CONTACT

Sam Briggs  
SamB@PacTrust.com

Dave Hicks  
DaveH@PacTrust.com

503.624.6300



**PACTRUST**  
Pacific Realty Associates, L. P.

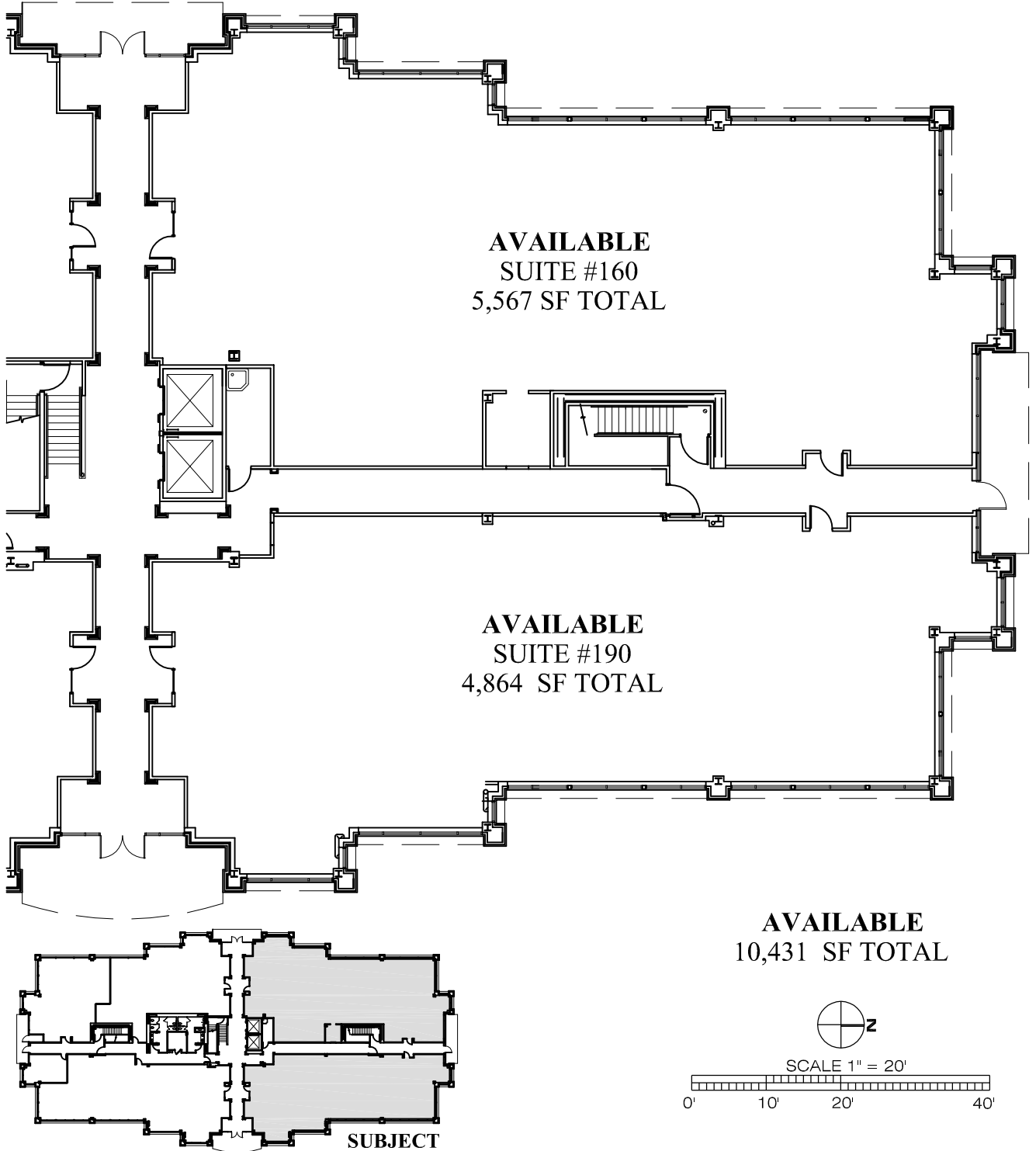
PacTrust • 15350 SW Sequoia Parkway, Suite 300 • Portland, OR 97224 • 503.624.6300 • www.pactrust.com

The square footage and rates quoted herein are subject to change, PacTrust can only guarantee square footage and rates with a signed lease agreement.

# Pacific Parkway Center

Building B • 12909 SW 68th Parkway Suite #190 • Portland, OR 97224

Available For Lease



**BUILDING KEY PLAN**  
FIRST FLOOR  
NOT TO SCALE



**PACTRUST**  
Pacific Realty Associates, L. P.