

PACIFIC PARKWAY

Building B • 12909 SW 68th PKWY #100 • Portland, OR 97224

Available For Lease



HIGHLIGHTS

- 4,229 sqft class A office
- Ground Floor Space
- Call for Availability
- Call for Rates
- Owner Managed

CONTACT

Sam Briggs
SamB@PacTrust.com

Dave Hicks
DaveH@PacTrust.com

503.624.6300

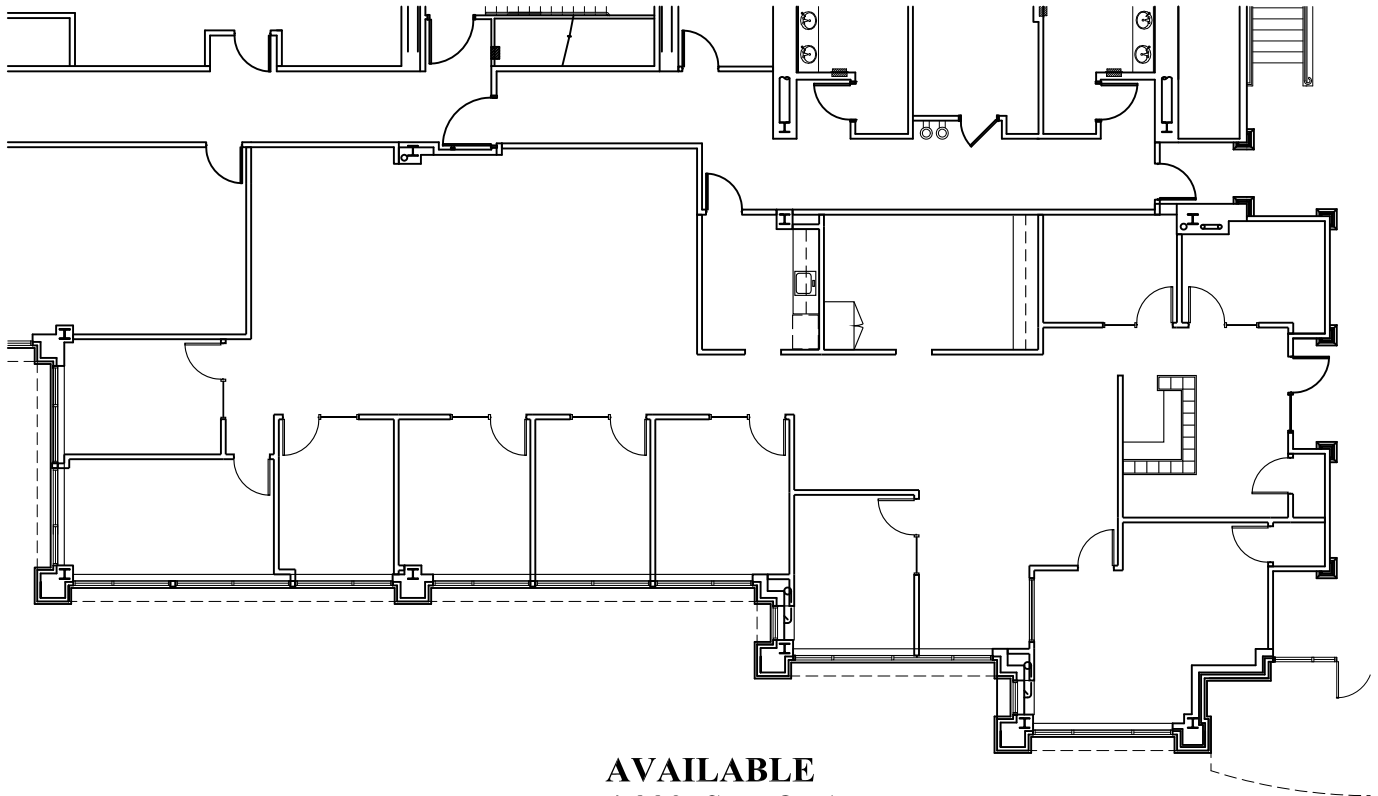


PACTRUST
Pacific Realty Associates, L. P.

PACIFIC PARKWAY

Building B • 12909 SW 68th PKWY #100 • Portland, OR 97224

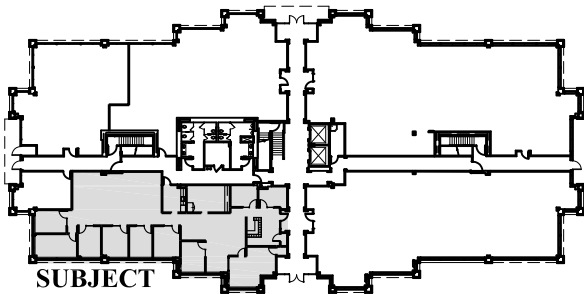
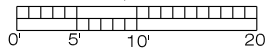
Available For Lease



AVAILABLE
4,229 SF TOTAL



SCALE 1/16"=1'-0"



SUBJECT

BUILDING KEY PLAN

NOT TO SCALE



PACTRUST

Pacific Realty Associates, L. P.

PacTrust • 15350 SW Sequoia Parkway, Suite 300 • Portland, OR 97224 • 503.624.6300 • www.pactrust.com

The square footage and rates quoted herein are subject to change. PacTrust can only guarantee square footage and rates with a signed lease agreement.