

ORENCO STATION TOWN CENTER

1,050 Sq Ft Retail



LOCATION

Building 2
1336 Orenco Station Parkway
Hillsboro OR 97124

LEASING CONTACT

Sam Briggs
samb@pactrust.com
503-624-6300

TOTAL SQ FT

1,050 SF

FEATURES

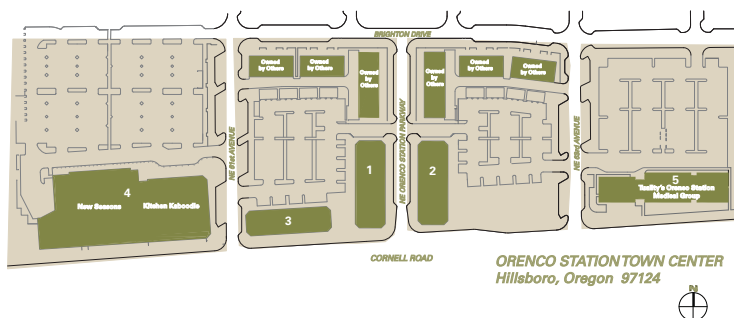
Retail space on ground floor
Upscale neighborhood retail
& office development
On TriMet's MAX Light Rail system

Dave Hicks
daveh@pactrust.com
503-624-6300

ANNUAL RATE

\$22.00/sqft
Full service

DATE AVAILABLE Available now



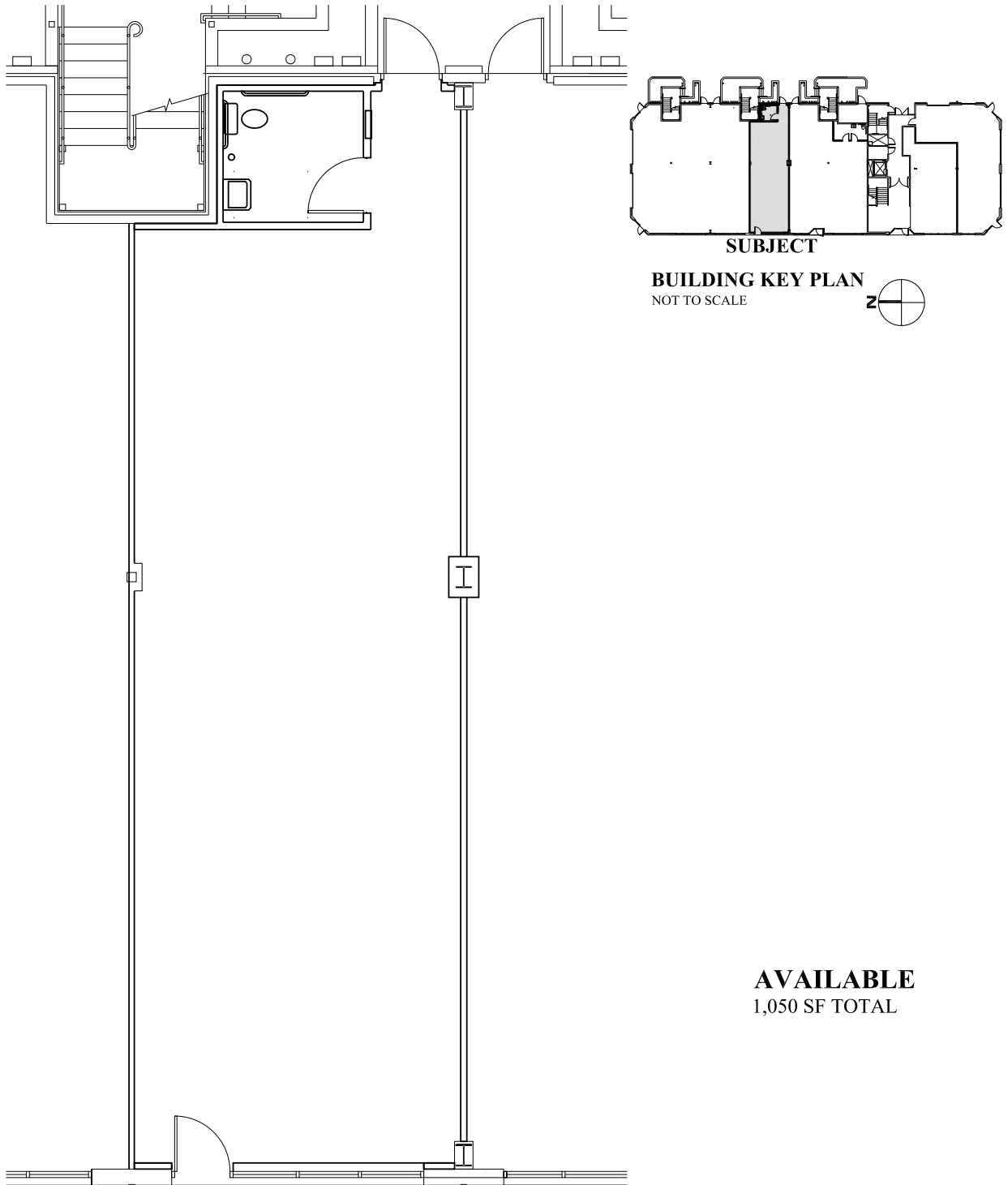
BUILDING KEY

1. 1323 - 1341 NE Orenco Station Parkway
2. 1320 - 1322 NE Orenco Station Parkway
3. 6111 - 6125 NE Cornell Road
4. 1415 - 1453 NE 61st Avenue
5. 6335 NE Cornell Road

All addresses are Hillsboro, OR 97124

ORENCO STATION TOWN CENTER

Building 2 • 1336 Orenco Station Parkway • Hillsboro OR 97124



PACTRUST

Pacific Realty Associates, L.P.

15350 SW Sequoia Parkway, Suite 300, Portland OR 97224 • 503-624-6300 • www.pactrust.com

The square footage and rates quoted herein are subject to change. PacTrust can only guarantee square footage and rates with a signed lease agreement.