

INTERNATIONAL CORPORATE CENTER

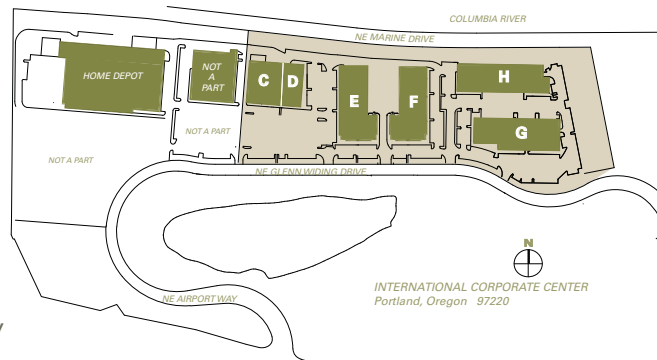
6,272 Sq Ft Office



LOCATION Building G
12021 NE Glenn Widing Drive
Portland OR 97220

TOTAL SQ FT 6,272 SF

FEATURES End-cap space
Great access to I-205
10 minutes to PDX
Retail, restaurants & services nearby



MONTHLY RATE \$1.00/sqft
NNN

DATE AVAILABLE Available now

LEASING CONTACT Matt Krueger
mattk@pactrust.com
503-624-6300

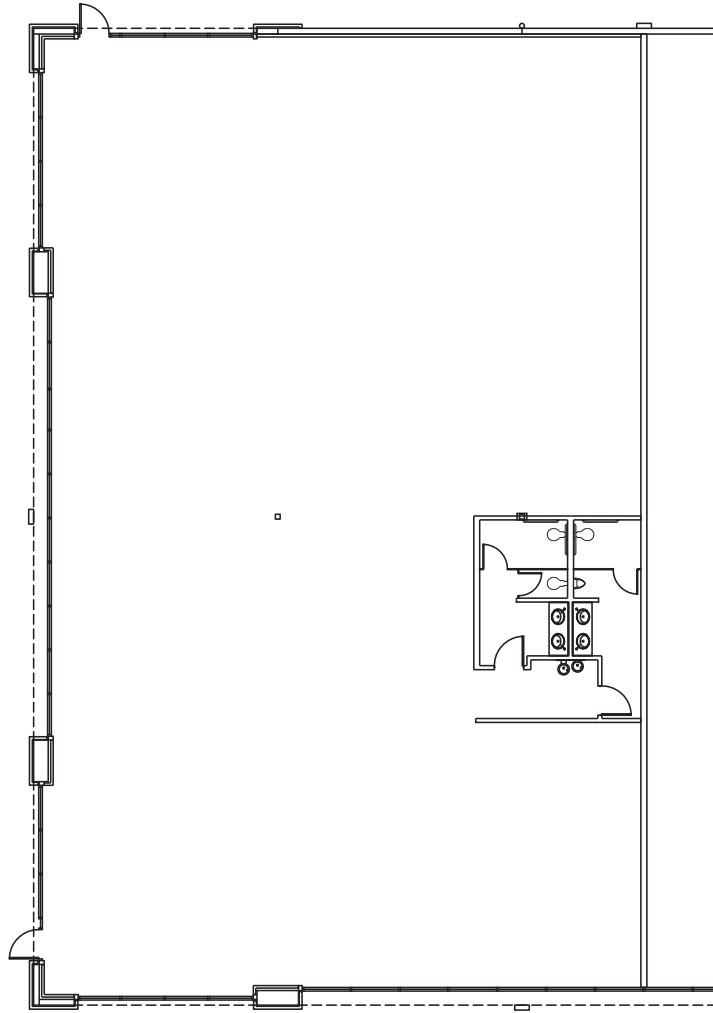
BUILDING KEY

- C. 11719 NE Glenn Widing Drive
- D. 11729 - 11731 NE Glenn Widing Drive
- E. 11815 - 11835 NE Glenn Widing Drive
- F. 11851 - 11879 NE Glenn Widing Drive
- G. 12021 - 12029 NE Glenn Widing Drive
- H. 11909 - 11933 NE Glenn Widing Drive

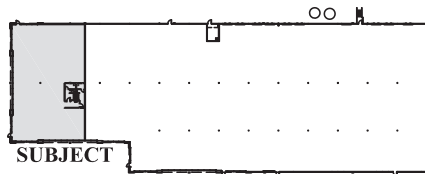
All addresses are
Portland, OR 97220

INTERNATIONAL CORPORATE CENTER

Building G • 12021 NE Glenn Widing Drive • Portland OR 97220



AVAILABLE
6,272 SF TOTAL



BUILDING KEY PLAN
NOT TO SCALE



PACTRUST

Pacific Realty Associates, L.P.

15350 SW Sequoia Parkway, Suite 300, Portland OR 97224 • 503-624-6300 • www.pactrust.com

The square footage and rates quoted herein are subject to change. PacTrust can only guarantee square footage and rates with a signed lease agreement.