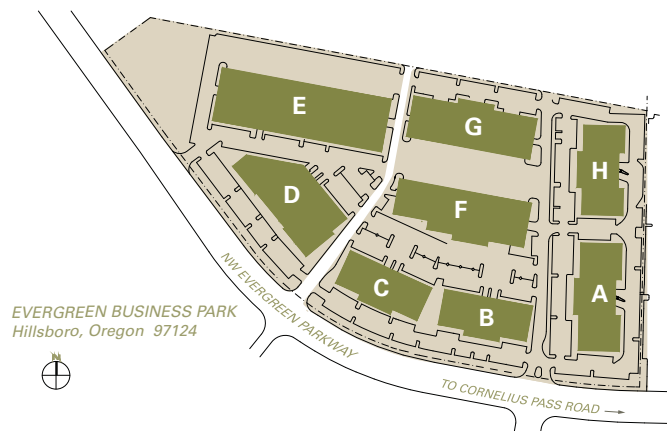


EVERGREEN BUSINESS PARK

15,640 Sq Ft Office



LOCATION	Building D 7175 NW Evergreen Parkway Suite 400 Hillsboro OR 97124
TOTAL SQ FT	15,640 SF
DIVISIBLE	Yes
FEATURES	End-cap space Exposure on Evergreen Parkway Close to Intel
MONTHLY RATE	\$1.00/sqft NNN
DATE AVAILABLE	Available now



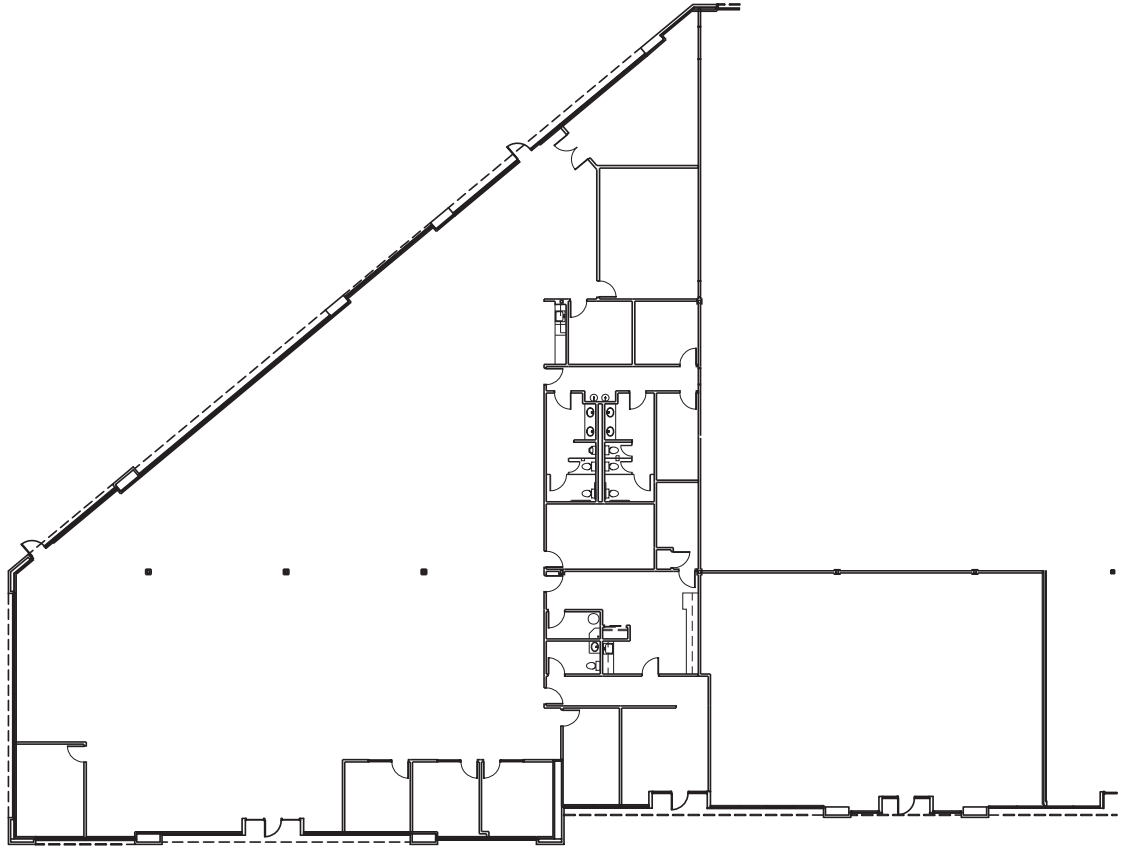
LEASING CONTACT	Sam Briggs samb@pactrust.com 503-624-6300
	Dave Hicks daveh@pactrust.com 503-624-6300

BUILDING KEY

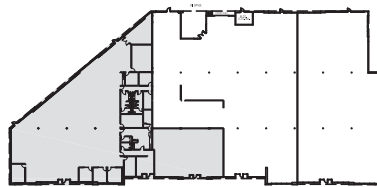
A.	7425 NW Evergreen Parkway	All addresses are Hillsboro OR 97124
B.	7245 NW Evergreen Parkway	
C.	7235 NW Evergreen Parkway	
D.	7175 NW Evergreen Parkway	
E.	7205 NW Evergreen Parkway	
F.	7275 NW Evergreen Parkway	
G.	7315 NW Evergreen Parkway	
H.	7395 NW Evergreen Parkway	

EVERGREEN BUSINESS PARK

Building D • 7175 NW Evergreen Parkway, Suite 400 • Hillsboro OR 97124



AVAILABLE
15,640 SF TOTAL



SUBJECT

BUILDING KEY PLAN
NOT TO SCALE



PACTRUST

Pacific Realty Associates, L.P.

15350 SW Sequoia Parkway, Suite 300, Portland OR 97224 • 503-624-6300 • www.pactrust.com

The square footage and rates quoted herein are subject to change. PacTrust can only guarantee square footage and rates with a signed lease agreement.