

# DAVIS INDUSTRIAL PARK

## 18,000 Sq Ft Warehouse/Distribution



### LOCATION

Building C  
3255 NWYeon Avenue  
Portland OR 97210

### TOTAL SQ FT

18,000 SF

### OFFICE SQ FT

2,093 SF

### DOCK-HIGH DOORS

5

### FEATURES

End-cap space  
Exposure on NWYeon

### MONTHLY RATE

\$0.40/sqft  
NNN

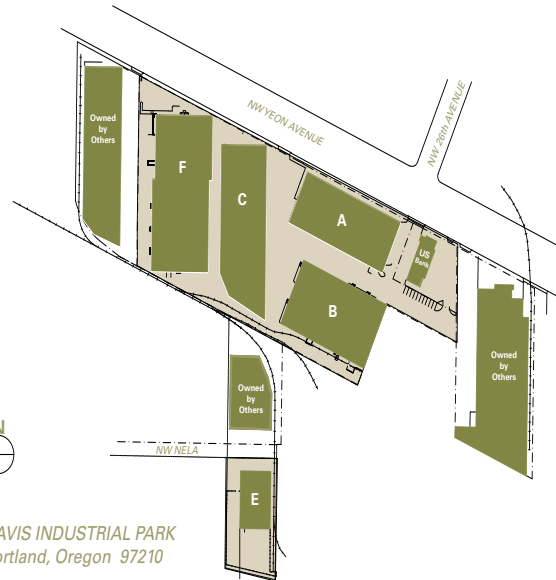
### DATE AVAILABLE

1st quarter 2012

### LEASING CONTACT

Sam Briggs  
samb@pactrust.com  
503-624-6300

Dave Hicks  
daveh@pactrust.com  
503-624-6300



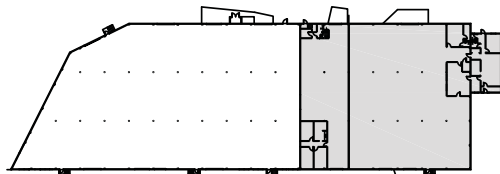
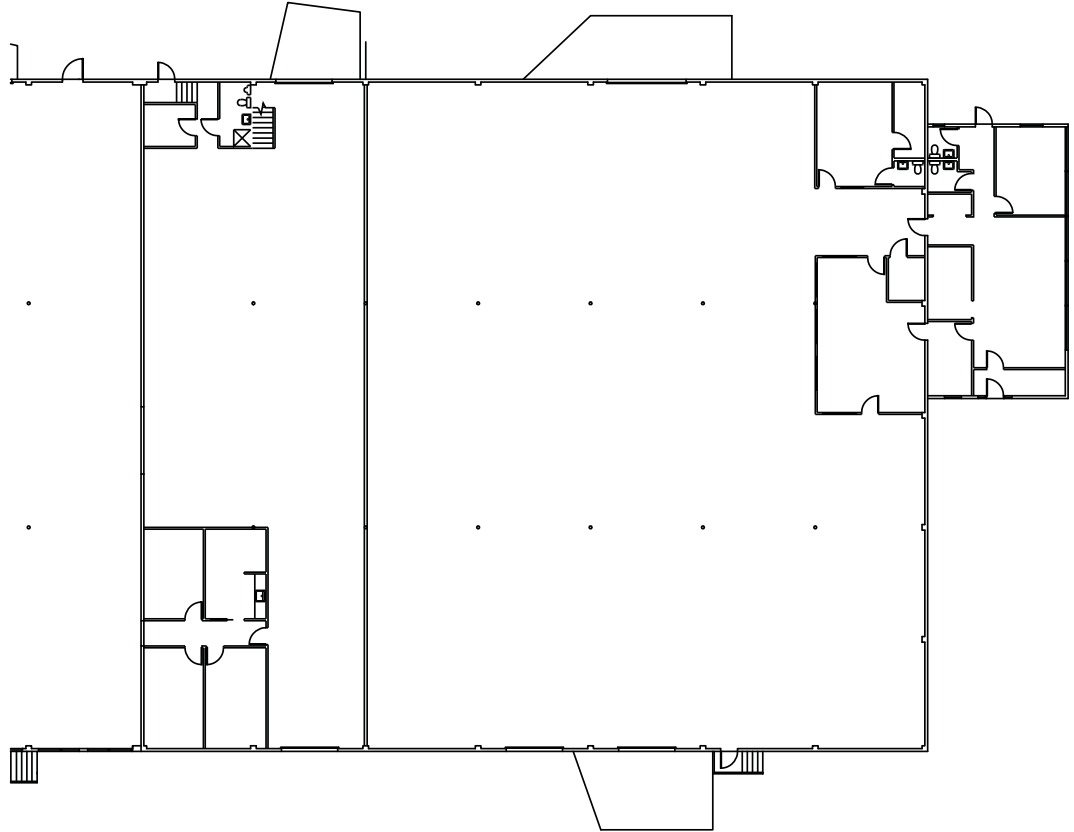
DAVIS INDUSTRIAL PARK  
Portland, Oregon 97210

### BUILDING KEY

- A. 3205 NWYeon Avenue
  - B. 3221 NWYeon Avenue
  - C. 3241 - 3255 NWYeon Avenue
  - E. 2728 NW Nela Street
  - F. 3259 - 3265 NWYeon Avenue
- All addresses are  
Portland, OR 97213

# DAVIS INDUSTRIAL PARK

Building C • 3255 NW Yeon Avenue • Portland OR 97210



SUBJECT

AVAILABLE  
18,000 SF TOTAL  
2,093 SF OFFICE

**BUILDING KEY PLAN**  
NOT TO SCALE



## PACTRUST

Pacific Realty Associates, L.P.

15350 SW Sequoia Parkway, Suite 300, Portland OR 97224 • 503-624-6300 • [www.pactrust.com](http://www.pactrust.com)

The square footage and rates quoted herein are subject to change. PacTrust can only guarantee square footage and rates with a signed lease agreement.